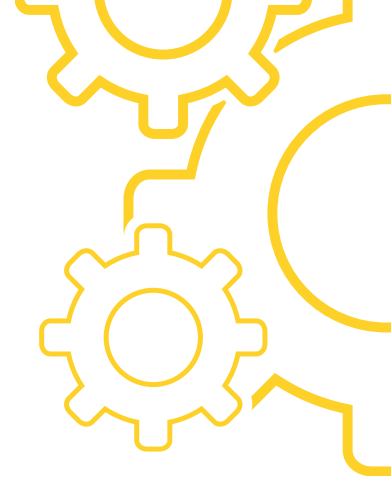


USER MANUAL

# DASHBOARD WARNING LIGHTS- MEANING, RESPONSE & FIXES

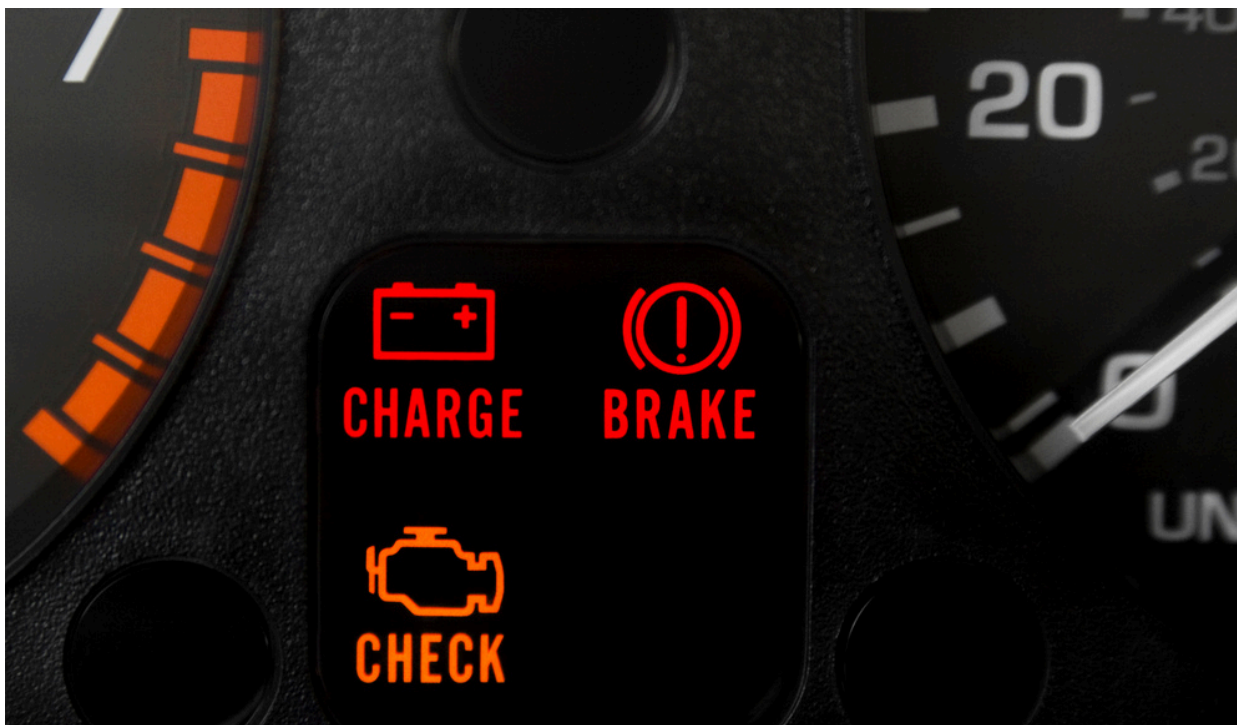


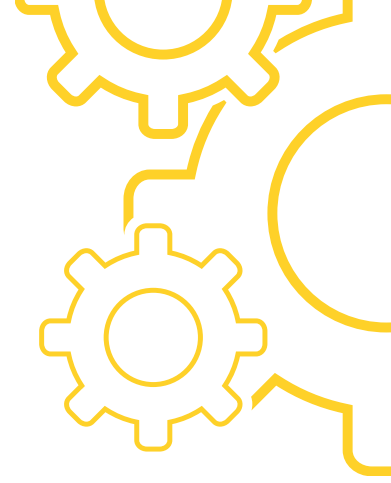
**PUBLISHED BY:**  
**CARPARTSSTOREUSA.COM**



# 1. Introduction

This manual explains what the warning lights on your dashboard mean. It doesn't use technical fluff. Everything here is based on what drivers deal with in daily use. If a light shows up, there's a reason. Some need attention right away. Others can wait a bit. But none should be ignored for long.



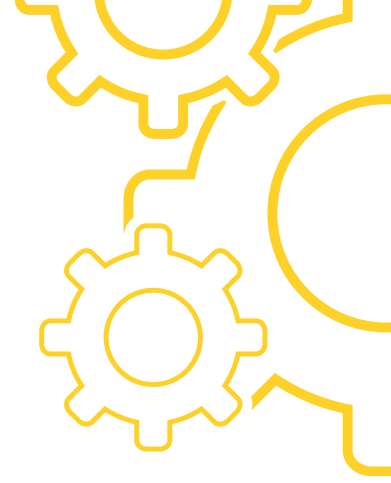


## **2. Check Engine Light**

1. This is the most common warning. It means something in the engine or emission system isn't right. Could be small, could be serious.

2. If the light is steady, the car can usually be driven. Get the code read soon — any auto parts shop can do it. If the light flashes, stop the car. That means the engine is misfiring badly. Driving like that will damage more parts, especially the catalytic converter.

3. In many cases, the gas cap is loose. Tighten it and see if the light goes off in a day or two. If not, get it scanned. Common causes: bad spark plug, coil, or O2 sensor.

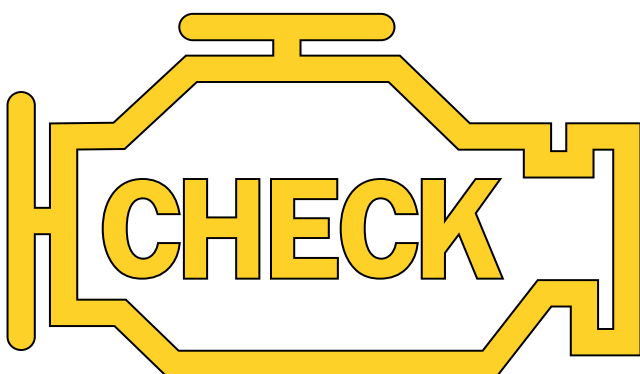


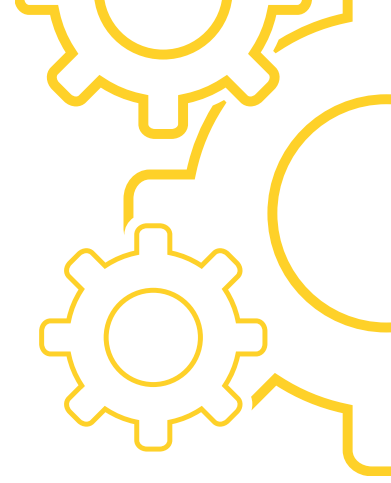
## 3. Oil Pressure Light

1. This light means oil isn't circulating properly. Could be low oil or a bad pump. Either way, shut the engine off right away.

2. Check oil level with the dipstick. If low, add oil. If the light stays on even after topping off, don't start the engine again. Tow it to a shop.

3. Driving with low oil pressure will destroy the engine.





## 4. Battery Light

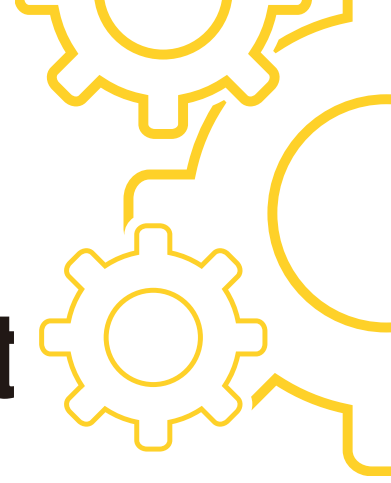
1. This light can mean one of two things, either the charging system is not working or battery is not getting any power from the alternator.

2. If this comes on while driving, turn off extra stuff — AC, stereo, etc. Get to a garage quickly. If the battery drains, the car will stall and won't restart.

3. Could be a worn alternator, loose belt, or corroded battery terminals. A voltmeter can confirm.

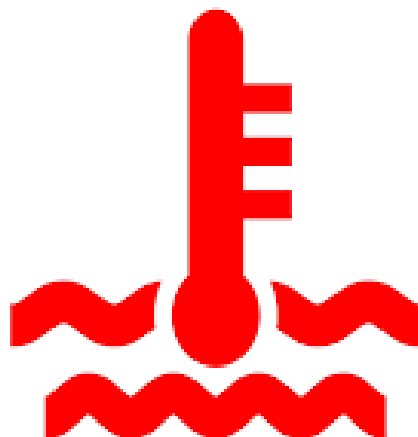


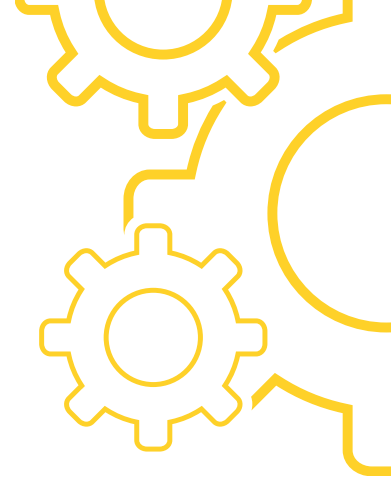
## 5. Engine Temperature Light



1. This shows up when the engine is overheating. Could be low coolant, failed thermostat, or bad water pump.

2. Stop driving. Let the engine cool before touching the cap. Add coolant if it's low. If the level is fine, there's a deeper issue. Don't ignore this — overheating can crack the engine block or blow the head gasket.





## 6. Brake System Light

1.If this comes on, it could be low brake fluid or a problem in the braking system. Also lights up if the handbrake is still engaged.

2.Check if the handbrake is off first. If it is, check brake fluid. If that's low, don't drive far. Leaks in the brake system are dangerous. If the brake pedal feels soft or goes to the floor, stop using the car and get it towed.





## 7. Tire Pressure Light (TPMS)

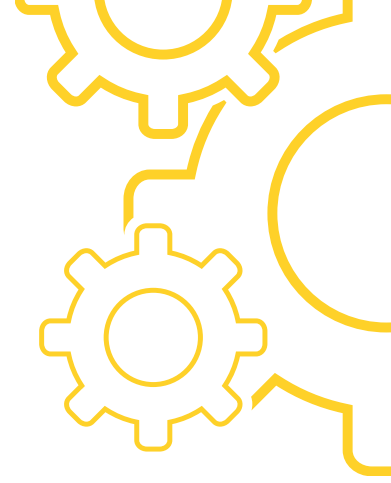
1. This light means one or more tires are below recommended pressure. Can be due to a slow leak or weather change.

2. Always check the pressure by a gauge, do not estimate. Low tire pressure affects mileage as well. Keep the pressure as mentioned in the user manual or listed on the door. If the light is still on, either the sensor is faulty or tire is punctured.

3. Driving with low tire pressure will damage the tire and lower fuel economy.





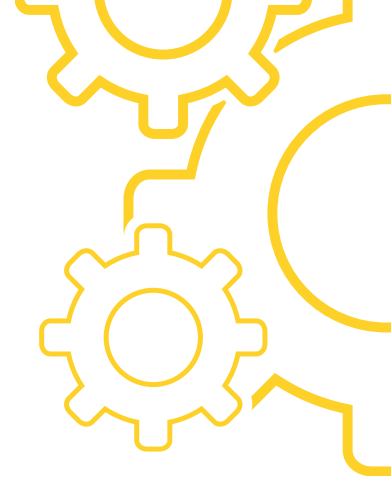


## 8. Airbag Light

This means there's a fault in the airbag system. In some cases, the airbag may not deploy in a crash. In others, it may deploy when it shouldn't.

It doesn't affect how the car drives, but don't put it off. Airbag systems are important for safety. A scan will point out the exact problem. Common causes are loose connectors under the seat or a failed control module.





## 9. ABS Light

1. This means the anti-lock brake system isn't working. Regular brakes still work, but ABS won't engage if you slam the brakes.

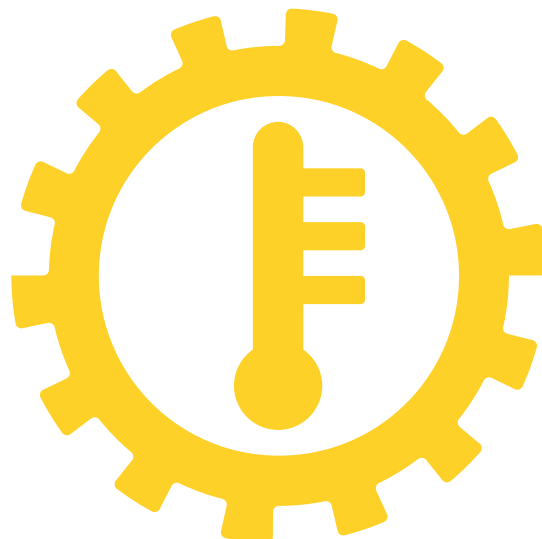
2. Not an emergency, but be careful on wet or icy roads. Could be a dirty or damaged wheel speed sensor. A mechanic can fix this fast.

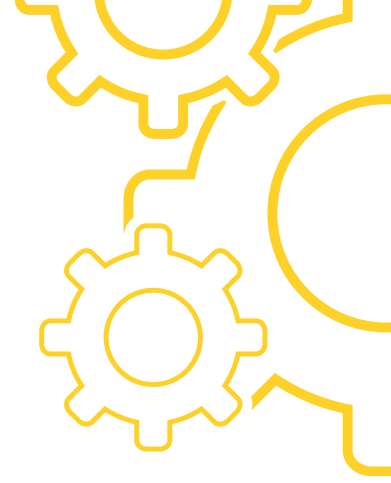


## 10. Transmission Temperature Light

1. This comes on when the transmission is too hot. Can happen during towing or in heavy traffic. Low fluid is usually the cause.

2. Stop the car and let it idle in Park. If the light goes off, drive to a shop. If it stays on, get it checked immediately. Transmission repairs are expensive — don't ignore this.



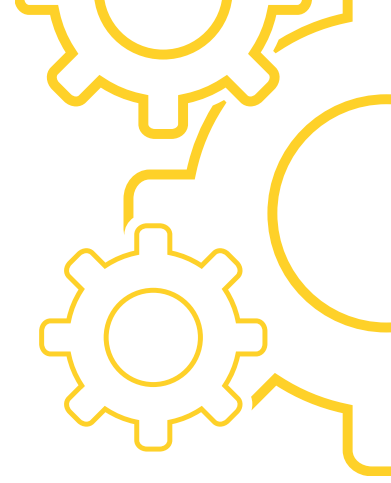


## 11. Final Advice

All these lights are part of your car's way of warning you before things get worse. Red lights need quick action. Orange or yellow usually give you time to plan repairs.

Don't guess. Most warnings can be checked with a scan tool. If you don't have one, most local shops or parts stores will check codes for free.

If a light comes on and you don't understand what to do, don't keep driving. Stop, assess, and act based on the light's urgency.



## 12. Practical Fixes and Part Replacements

If your warning light needs a part replaced – oxygen sensor, alternator, coil, etc. – don't overpay at the dealership.

We at **carpartsstoreusa.com** stock tested, verified used parts for nearly every make and model. You'll get working parts at a lower cost, with fast delivery and support. All parts are checked for real-world function, not just shelf condition.



**13K**

Engines Sale



**17,000+**

Satisfied Customers



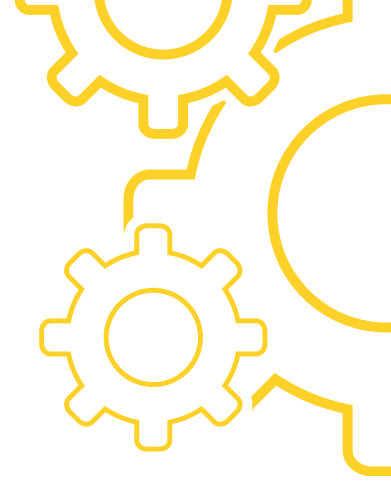
**Over 34M**

Used OEM Parts



**1140+**

Inventory Yards



## 13. Conclusion

Dashboard lights are warnings, not suggestions. They help you avoid bigger problems. If a light shows up, find out what it means and deal with it based on the risk level.

This manual sticks to what matters – facts, symptoms, actions. No gimmicks, no over-explaining, just what you need to keep your car safe and working.



# *Thank You*

 [info@carpartsstoreusa.com](mailto:info@carpartsstoreusa.com)



Scan the QR code to  
visit our website